

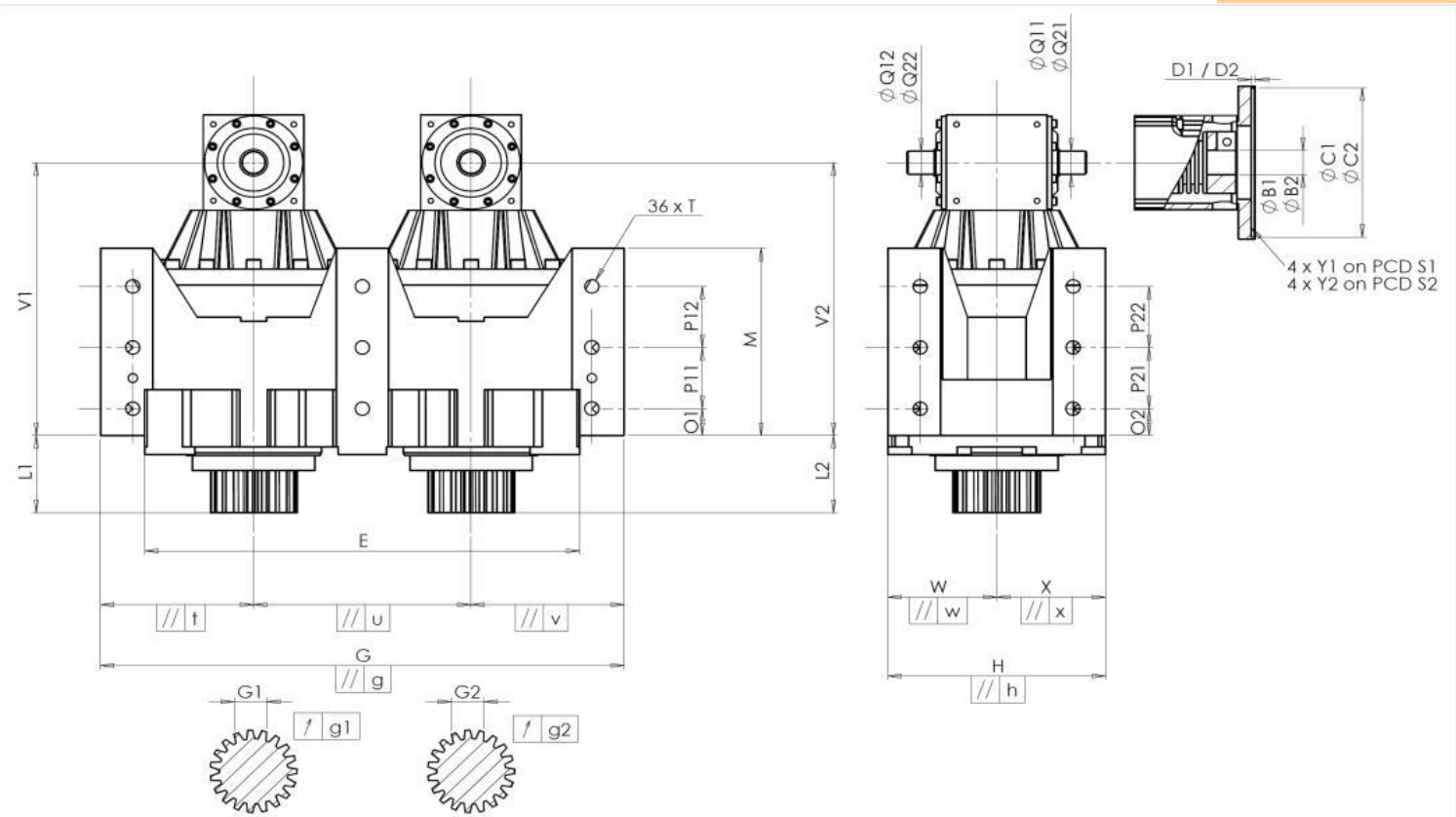
CUSTOMER: NIDEC
DISTRIBUTOR: S & F INC
DESIGNATION: DRP4+P.46.4.H
CODE: RX130917-13
CUSTOMER ORDER REF: *231212IB-1 NIDEC
REDEX ORDER REF: 218412
SERIAL NUMBER: 908585
MOTOR FLANGE CODE: RX129551-03

For the installation, please refer to User Manual DRP (182/009)

SPECIFIC REMARKS:

Product images are for illustrative purposes only.

EXTERNAL DIMENSIONS & INTERFACES: SN: 908585



General tolerance: Js13
Cmm Automatic / manual coordinate-measuring machine
µm Micrometer
Cr Calliper rule
Di Dial indicator
Pg Plug gauge

HOUSING				HOUSING				MOTOR FLANGE			
requirement	measure	requirement	measure	requirement	measure	requirement	measure				
	G1751	O1	43	Cr	43		G3882				
E	640 ⁰ _{-0,1}	Cmm	639,946	P11	100	Cr	100	∅ B1	114,3 ^{+0,047} _{+0,012}	µm	114,315
G	800 ^{+0,2} _{-0,2}	Cmm	800,094	P12	100	Cr	100	∅ C1	35 ^{+0,05} _{+0,025}	µm	35,04
// g	0,05	Cmm	0,036	M	288 ^{+0,1} _{-0,1}	Cmm	288,066	D1	18	Cr	18
// t	0,05	Cmm	0,002	O2	43	Cr	43	∅ S1	200	Cr	200
// u	0,035	Cmm	0,003	P21	100	Cr	100	∅ Y1	M12	Pg	M12
// v	0,05	Cmm	0,001	P22	100	Cr	100				
W	160	Cmm	160,004	∅ T	M24	Pg	M24				
// w	0,04	Cmm	0,003	OUTPUT PINION				∅ B2	114,3 ^{+0,047} _{+0,012}	µm	114,315
X	160	Cmm	160,011					Pinion 1		G3469	∅ C2
// x	0,04	Cmm	0,003	Span dimension over 3 teeth				D2	18	Cr	18
H	320 ^{+0,04} _{-0,04}	Cmm	320,015	G1	46,9 ⁰ _{-0,03}	Cmm	46,88	∅ S2	200	Cr	200
// h	0,02	Cmm	0,013	g1	0,022	Di	0,01	∅ Y2	M12	Pg	M12
V1	435	Cmm	435,14	Pinion 2				Line		Stiffness	
L1	120	Cmm	120,065	Span dimension over 3 teeth				Torsional stiffness (Nm/arcmin)	1	745,99	
V2	435	Cmm	435,1	G2	46,9 ⁰ _{-0,03}	Cmm	46,88	Radial stiffness (N/µm)	1	1024	
L2	120	Cmm	120,071	g2	0,022	Di	0,01	2	1107		
∅ Q11/Q12	35 ^{+0,011} _{-0,005}	Cmm	35,01/35,005	No-load input torque				Noise level			
∅ Q21/Q22	35 ^{+0,011} _{-0,005}	Cmm	35,005/35,005	Line 1				@ 1300 rpm input (dB(A))			
				Line 2				70,0			

Date: 18/04/2024

Visa: C DE MIRANDA

Version: A