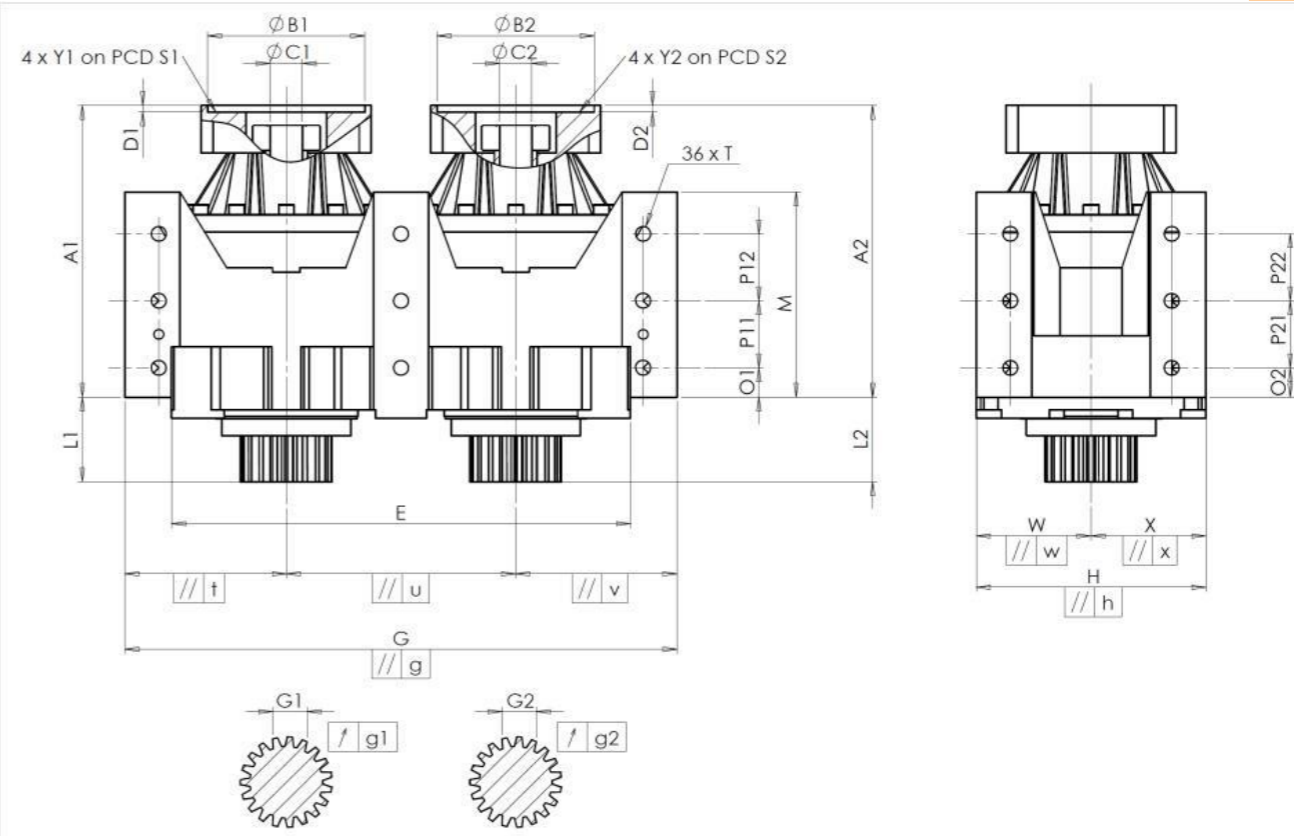


CUSTOMER: MASTER TRADING
 CUSTOMER ORDER REF: *33509 MASTER TRADING
 DISTRIBUTOR: REDEX ORDER REF: 218114
 DESIGNATION: DRP4+M.91.3.H.35/48
 SERIAL NUMBER: 908151
 CODE: RX129702-33
 MOTOR FLANGE CODE: RX128583-06

EXTERNAL DIMENSIONS & INTERFACES:
 SN: 908151



For the installation, please refer to User Manual DRP (182/009)

SPECIFIC REMARKS:
 (1) Accepted according to Redex derogation 13542

HOUSING		HOUSING		MOTOR FLANGE	
requirement	measure	requirement	measure	requirement	measure
	E8124	O1	43	Ø B1	115
E	640 ⁰ _{-0,1} Cmm	P11	100	Ø C1	35 ^{+0,05} _{+0,025}
G	800 ^{+0,2} _{-0,2} Cmm	P12	100	D1	8
// g	0,05 Cmm	M	288 ^{+0,1} _{-0,1} Cmm	Ø S1	200
// t	0,05 Cmm	O2	43	Ø Y1	M12
// u	0,035 Cmm	P21	100	Ø B2	115
// v	0,05 Cmm	P22	100	Ø C2	35 ^{+0,05} _{+0,025}
W	160 Cmm	Ø T	M24	D2	8
// w	0,04 Cmm			Ø S2	200
X	160 Cmm			Ø Y2	M12
// x	0,04 Cmm	OUTPUT PINION			
H	320 ^{+0,04} _{-0,04} Cmm	Pinion 1 F5564			
// h	0,02 Cmm	Span dimension over 3 teeth			
A1	394,5 Cmm	G1	46,9 ⁰ _{-0,03} Cmm		
L1	120 Cmm	g1	0,022 Di		
A2	394,5 Cmm	Pinion 2 F5544			
L2	120 Cmm	Span dimension over 3 teeth			
		G2	46,9 ⁰ _{-0,03} Cmm		
		g2	0,022 Di		
		No-load input torque			
		Line 1	0,8 Nm		
		Line 2	0,8 Nm		

	Line	Stiffness
Torsional stiffness (Nm/arcmin)	1	745,99
	2	745,99
Radial stiffness (N/µm)	1	1277
	2	1125

Noise level	
@ 1300 rpm input (dB(A))	60,5

Date: 27/11/2023

Visa: C DE MIRANDA

Version: A

Product images are for illustrative purposes only.