

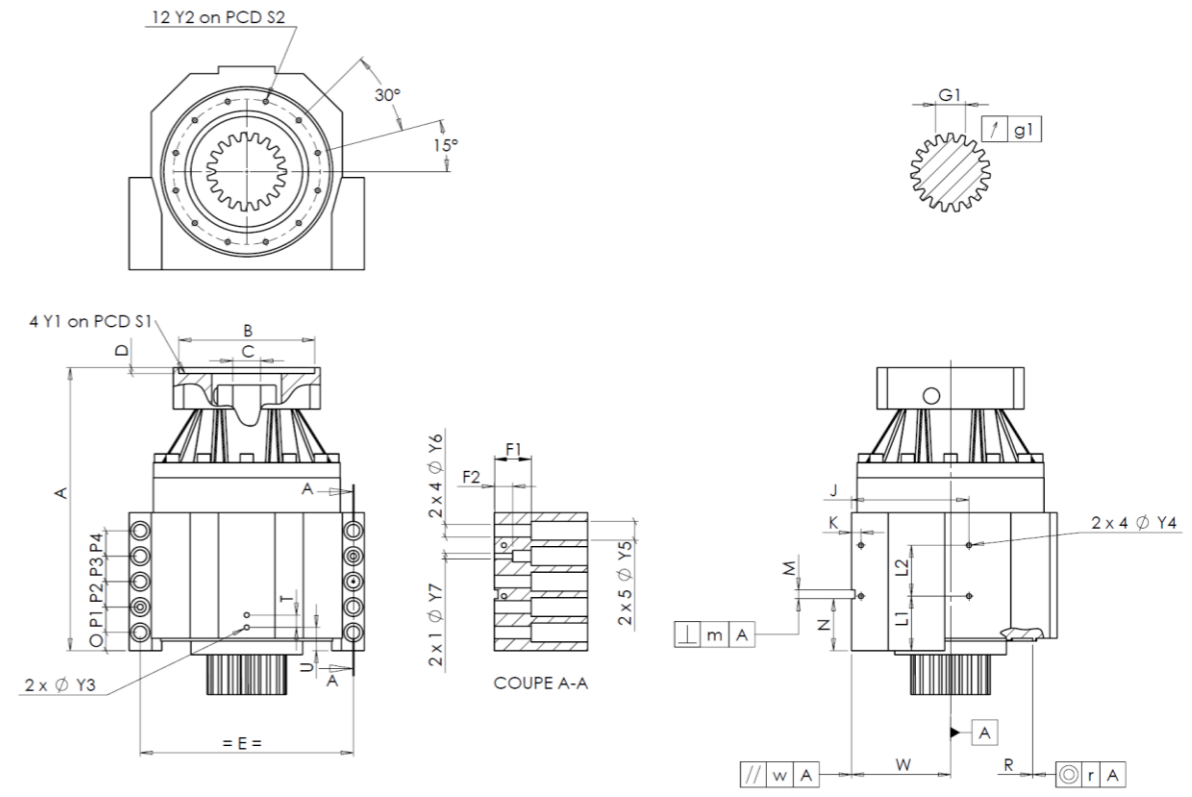
**CUSTOMER:** HUNAN VALIN      **CUSTOMER ORDER REF:** RXCN2023062841 HUNAN VALIN

**DISTRIBUTOR:** REDEX SHANGHAI REPAIRING      **REDEX ORDER REF:** 217967

**DESIGNATION:** KRPX1+M.31.3.S.22/32      **SERIAL NUMBER:** 908043

**CODE:** RX132669-12      **MOTOR FLANGE CODE:** RX128707-05

**EXTERNAL DIMENSIONS & INTERFACES:**      **SN:** 908043



For the installation, please refer to User Manual KRPX (182/010)

**SPECIFIC REMARKS:**

General tolerance: Js13      Cmm      Automatic / manual coordinate-measuring machine      μm      Micrometer      Cr      Calliper rule      Di      Dial indicator      Pg      Plug gauge

HOUSING				HOUSING				MOTOR FLANGE						
requirement	measure	requirement	measure	requirement	measure	requirement	measure							
	E6481	L1	51	Cr	51	∅	B	131	μm	131				
∅	Y2	M6x12	Pg	M6x12	L2	48	Cr	48	∅	C	32	+0,05 +0,025	μm	32,025
	A	253	μm	253,72	J	105	Cr	105		D	8	Cr	8,52	
	E	175	Cr	175	K	11	Cr	11	∅	S1	165	Cr	165	
	O	15	Cr	15	2 x 4∅	Y4	M6x12	Pg	M6x12	∅	Y1	M10	Pg	M10
	P1	24	Cr	24	F1	40	Cr	40	<b>No-load input torque</b>					
	P2	24	Cr	24	F2	24	Cr	24						Line 1
	P3	24	Cr	24	2 x 1∅	Y7	10	μm	10	<b>Line      Stiffness</b>				
	P4	24	Cr	24	2 x 4∅	Y6	11	μm	11					
	T	14	Cr	14	2 x 5∅	Y5	18	μm	18	Radial stiffness (N/μm)		1      375		
2 x 1∅	Y3	M6x12	Pg	M6x12	M H6	8	+0,009 0	Cmm	8					
	U	26	Cr	26	⊥	m	0,05	Cmm	0,015					
	R	135	+0,2 +0,1	Cmm	135,142	A								
⊙	r	0,1	Cmm	0,006	//	w	0,03	/A	Cmm					

OUTPUT PINION				Noise level	
		G3095		@1600 rpm input (dB(A))	62,5
Span dimension over 3 teeth					
	G1	23,28	0 -0,03	Cmm	23,255
	g1	0,021		Di	0,02

**Date:** 01/12/2023      **Visa:** C DE MIRANDA

**Version:** A

Product images are for illustrative purposes only.