

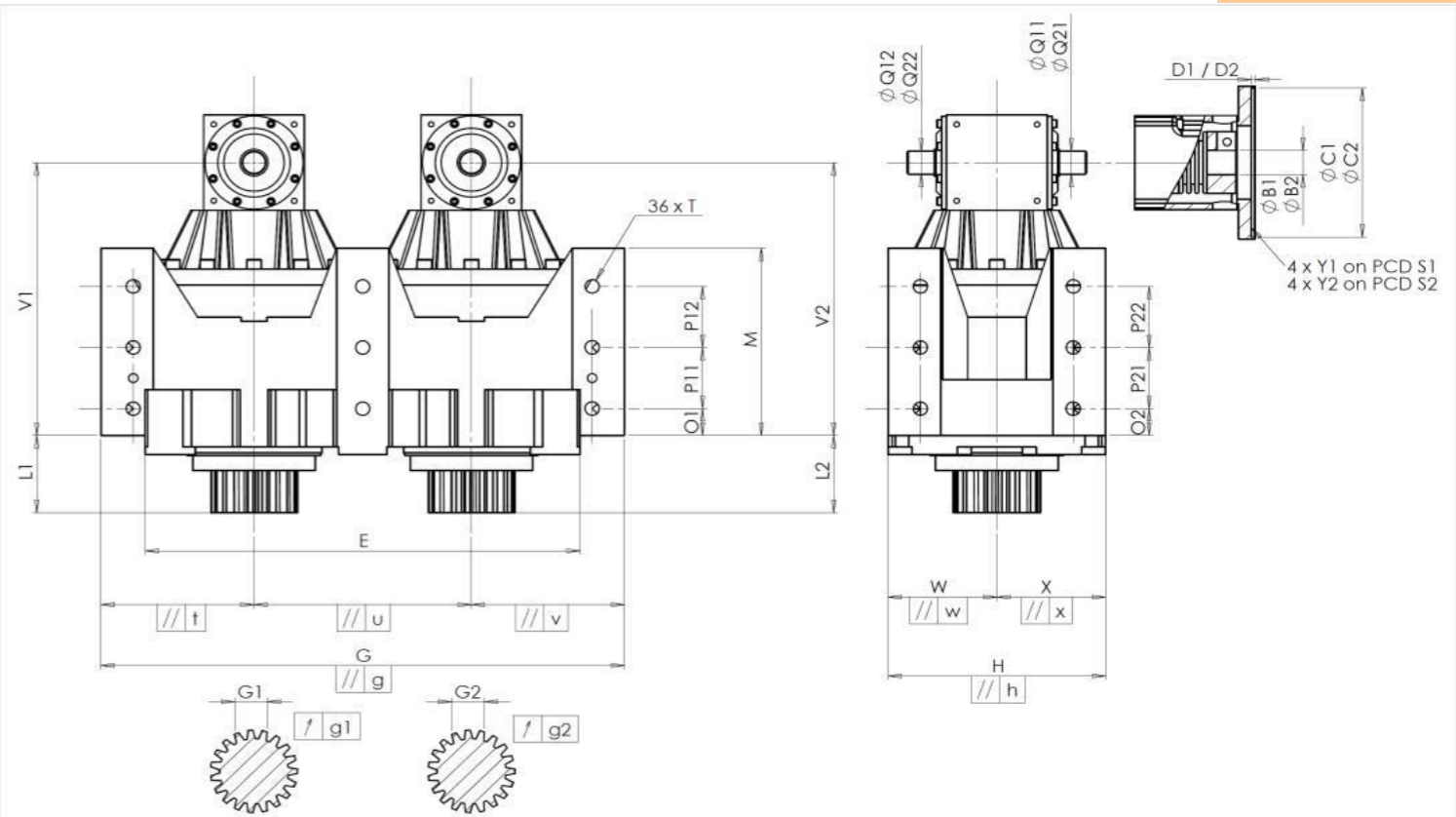
CUSTOMER: NCT IPARI ELEKTRO
DISTRIBUTOR: REDEX
DESIGNATION: DRP2.P1.46.4.H
CODE: RX135699-13
CUSTOMER ORDER REF: M19145 NCT ZRT
REDEX ORDER REF: 217495
SERIAL NUMBER: 908027
MOTOR FLANGE CODE: RX129627-01

For the installation, please refer to User Manual DRP (182/009)

SPECIFIC REMARKS:

Product images are for illustrative purposes only.

EXTERNAL DIMENSIONS & INTERFACES: SN: 908027



General tolerance: Js13
Cmm Automatic / manual coordinate-measuring machine
µm Micrometer
Cr Calliper rule
Di Dial indicator
Pg Plug gauge

HOUSING				HOUSING				MOTOR FLANGE			
requirement	measure	requirement	measure	requirement	measure	requirement	measure				
	G410	O1	30	Cr	30		F7220				
E	460 ⁰ _{-0,05}	Cmm	459,976	P11	75	Cr	75	Ø B1	180 ^{+0,054} _{+0,014}	µm	180,02
G	560 ^{+0,1} _{-0,1}	Cmm	560,034	P12	75	Cr	75	Ø C1	38 ^{+0,05} _{+0,025}	µm	38,05
// g	0,045	Cmm	0,02	M	210 ^{+0,1} _{-0,1}	Cmm	209,969	D1	8	Cr	8,09
// t	0,045	Cmm	0,005	O2	30	Cr	30	Ø S1	215	Cr	214,95
// u	0,03	Cmm	0,006	P21	75	Cr	75	Ø Y1	M12	Pg	M12
// v	0,045	Cmm	0,001	P22	75	Cr	75				F7221
W	115	Cmm	115,016	Ø T	M16	Pg	M16	Ø B2	180 ^{+0,054} _{+0,014}	µm	180,03
// w	0,03	Cmm	0,004	OUTPUT PINION				Ø C2	38 ^{+0,05} _{+0,025}	µm	38,05
X	115	Cmm	114,994					Pinion 1		F3781	D2
// x	0,03	Cmm	0,005	Span dimension over 4 teeth				Ø S2	215	Cr	214,97
H	230 ^{+0,025} _{-0,025}	Cmm	230,01	G1	44,27 ⁰ _{-0,03}	Cmm	44,26	Ø Y2	M12	Pg	M12
// h	0,02	Cmm	0,008	g1	0,022	Di	0,01	Line Stiffness			
V1	298	Cmm	298,319	Pinion 2		F3788	Torsional stiffness (Nm/arcmin)				1
L1	85	Cmm	85,097	Span dimension over 4 teeth				2	243,75		
V2	298	Cmm	298,274	G2	44,27 ⁰ _{-0,03}	Cmm	44,26	Radial stiffness (N/µm)	1	628	
L2	85	Cmm	85,125	g2	0,022	Di	0,01	2	563		
Ø Q11/Q12	25 ^{+0,009} _{-0,004}	Cmm	25,005	No-load input torque				Noise level			
Ø Q21/Q22	25 ^{+0,009} _{-0,004}	Cmm	25,002	Line 1	0,7 Nm		@ 1600 rpm input (dB(A))				72,0
				Line 2	0,8 Nm						

Date: 27/10/2023

Visa: C DE MIRANDA

Version: A