

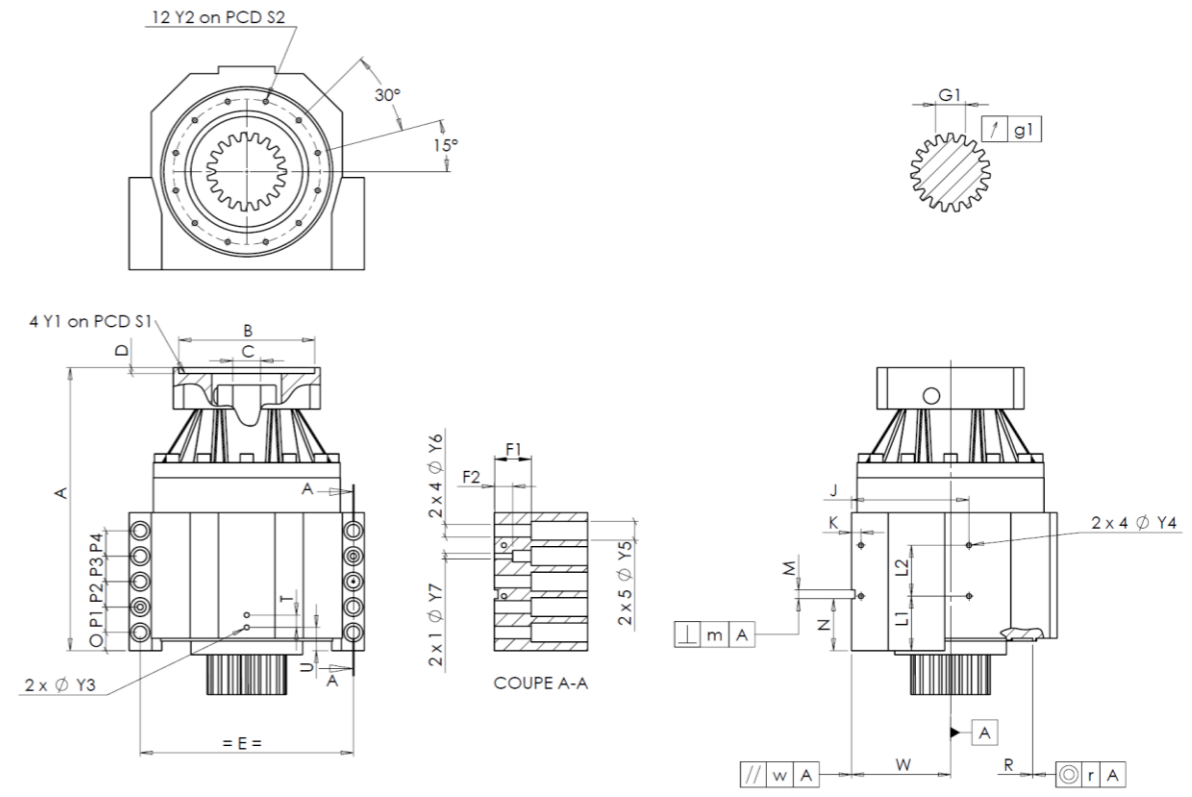
CUSTOMER: **KIHEUNG MACHINERY** **CUSTOMER ORDER REF:** ***A7297-003-R1 KIHEUNG**

DISTRIBUTOR: **REDEX ORDER REF:** **217563**

DESIGNATION: **KRPX2.M1.31.3.H.28/38** **SERIAL NUMBER:** **908001**

CODE: **RX134762-12** **MOTOR FLANGE CODE:** **RX128581-01**

EXTERNAL DIMENSIONS & INTERFACES: **SN:** **908001**



For the installation, please refer to User Manual KRPX (182/010)

SPECIFIC REMARKS:

General tolerance: Js13 Cmm Automatic / manual coordinate-measuring machine μm Micrometer Cr Calliper rule Di Dial indicator Pg Plug gauge

HOUSING				HOUSING				MOTOR FLANGE				
requirement		measure		requirement		measure		requirement		measure		
			F122		L1	60	Cr	60				
	Y2	M6x12	Pg	M6x12	L2	60	Cr	60	∅	B	181	
∅	S2	165 ^{+0,1} _{-0,1}	Cr	165	J	130	Cr	130	∅	C	38 ^{+0,05} _{+0,025}	
	A	332	μm	332,56	K	11	Cr	11		D	8	
	E	240	Cr	240	2 x 4∅	Y4	M6x12	Pg	M6x12	∅	S1	215
	O	15	Cr	15	F1	40	Cr	40	∅	Y1	M12	
	P1	30	Cr	30	F2	24	Cr	24	No-load input torque			
	P2	30	Cr	30	2 x 1∅	Y7	10	μm				10
	P3	30	Cr	30	2 x 4∅	Y6	15,5	μm	15,5	Line Stiffness		
	P4	30	Cr	30	2 x 5∅	Y5	24	μm	24			Torsional stiffness (Nm/arcmin)
	T	14	Cr	14	M H6	10 ^{+0,009} ₀	Cmm	10,007	Radial stiffness (N/μm)	1	551	
	U	26	Cr	26	⊥	m	0,05	Cmm	0,004			
2 x 1∅	Y3	M6x12	Pg	M6x12		N	55 ^{+0,1} _{-0,1}	Cmm	54,942			
	R	186 ^{+0,2} _{+0,1}	Cmm	186,15	A	W	110 ^{+0,02} _{-0,02}	Cmm	110,009			
⊙	r	0,1	Cmm	0,019	//	w	0,03	/A	Cmm	0,005		

OUTPUT PINION				Noise level	
			F3771	@1600 rpm input (dB(A))	64,0
Span dimension over 4 teeth					
	G1	44,27 ⁰ _{-0,03}	Cmm	44,259	
↗	g1	0,022	Di	0,01	

Date: 27/10/2023 **Visa:** C DE MIRANDA

Version: A

Product images are for illustrative purposes only.