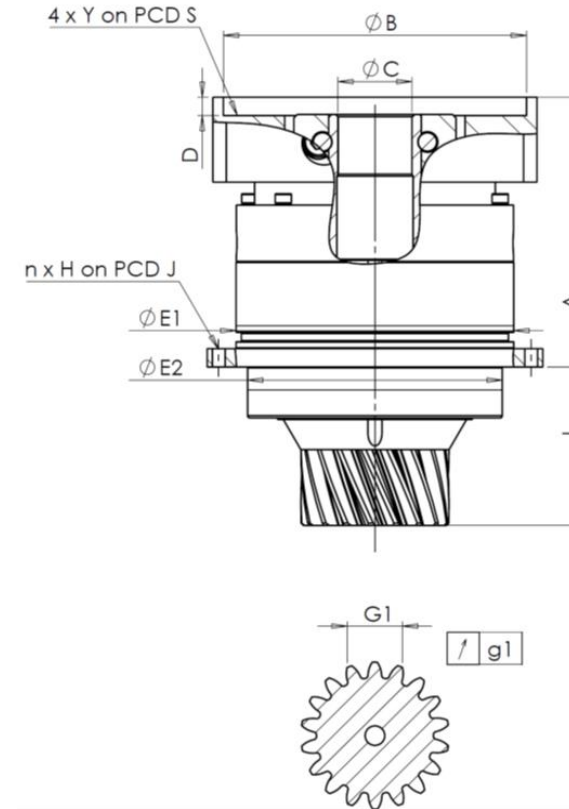


CUSTOMER: **UNIOR** CUSTOMER ORDER REF: ***B8155-23 UNIOR**
 DISTRIBUTOR: **REDEX ORDER REF: 217959**
 DESIGNATION: **KRP0+M.5.3.143H.V3.22/32** SERIAL NUMBER: **907881**
 CODE: **RX135902-01** MOTOR FLANGE CODE: **RX128707-07**

EXTERNAL DIMENSIONS & INTERFACES: SN: **907881**



General tolerance: Js13 Cmm Automatic / manual coordinate-measuring machine µm Micrometer Cr Calliper rule Di Dial indicator Pg Plug gauge

For the installation, please refer to User Manual KRP (182/008)

SPECIFIC REMARKS:

HOUSING					OUTPUT PINION					MOTOR FLANGE					
requirement		measure			requirement		measure			requirement		measure			
		H1945					G1458								
Ø	E1	120h7 ⁰ _{-0,035}	µm	119,995	Span dimension over 3 teeth					Ø	B	131	µm	131	
Ø	E2	110h7 ⁰ _{-0,035}	µm	109,99	G1	23,466 ^{-0,071} _{-0,082}	Cmm	23,389	Ø	C	32 ^{+0,05} _{+0,025}	µm	32,03		
n x H on PCD J		8Ø5,5 on PCD 135	Cr	8Ø5,5 on PCD 135	g1	0,021	Di	0,01	Ø	D	8	Cr	8,46		
		A	128,5	µm	128,96	No-load input torque					Ø	S1	165	Cr	165
		L	69	µm	69,39	Line 1		0,3 Nm			Ø	Y1	M10	Pg	M10

Noise level			
		Line	Stiffness
		1600 rpm input (dB(A))	
		66,0	
Torsional stiffness (Nm/arcmin)	1	40	
Radial stiffness (N/µm)	1	160	

Date: **05/10/2023**

Visa: **C DE MIRANDA**

Version: **A**

Product images are for illustrative purposes only.