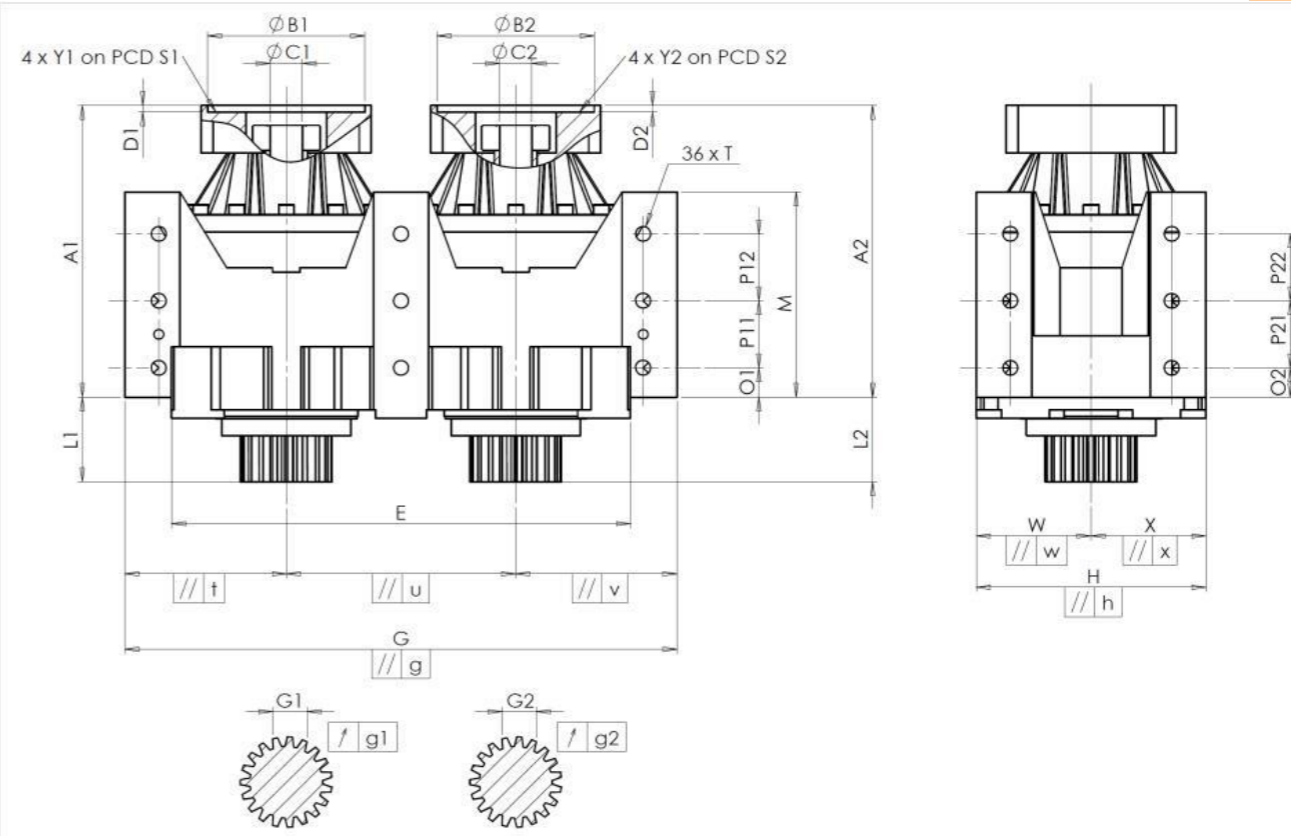


CUSTOMER: NCT IPARI ELEKTRO
 CUSTOMER ORDER REF: *M1 9145 NCT ZRT
 DISTRIBUTOR: REDEX ORDER REF: 217495
 DESIGNATION: DRP3.M1.61.3.H.28/38
 SERIAL NUMBER: 907581
 CODE: RX135701-32
 MOTOR FLANGE CODE: RX128581-02

EXTERNAL DIMENSIONS & INTERFACES:
 SN: 907581



For the installation, please refer to User Manual DRP (182/009)

SPECIFIC REMARKS:

HOUSING		HOUSING		MOTOR FLANGE	
requirement	measure	requirement	measure	requirement	measure
	F6571	O1	35	Ø B1	115
E	540 ⁰ _{-0,1} Cmm	P11	80	Ø C1	35 ^{+0,05} _{+0,025}
G	650 ^{+0,2} _{-0,2} Cmm	P12	80	D1	8
// g	0,045 Cmm	M	245 ^{+0,1} _{-0,1} Cmm	Ø S1	200
// t	0,045 Cmm	O2	35	Ø Y1	M12
// u	0,035 Cmm	P21	80	Ø B2	115
// v	0,045 Cmm	P22	80	Ø C2	35 ^{+0,05} _{+0,025}
W	135 Cmm	Ø T	M20	D2	8
// w	0,035 Cmm			Ø S2	200
X	135 Cmm			Ø Y2	M12
// x	0,035 Cmm	OUTPUT PINION			
H	270 ^{+0,04} _{-0,04} Cmm	Pinion 1 F2605			
// h	0,02 Cmm	Span dimension over 3 teeth			
A1	348,5 Cmm	G1	39,25 ⁰ _{-0,03} Cmm		
L1	101 Cmm	g1	0,022 Di		
A2	348,5 Cmm	Pinion 2 F2604			
L2	101 Cmm	Span dimension over 3 teeth			
		G2	39,25 ⁰ _{-0,03} Cmm		
		g2	0,022 Di		
		No-load input torque			
		Line 1	1,1 Nm		
		Line 2	1 Nm		
		Line		Stiffness	
		Torsional stiffness (Nm/arcmin)		1	473,03
				2	473,03
		Radial stiffness (N/µm)		1	953
				2	1053
		Noise level			
		@ 1600 rpm input (dB(A))			63,0

Date: 04/05/2023

Visa: C DE MIRANDA

Version: A

Product images are for illustrative purposes only.