

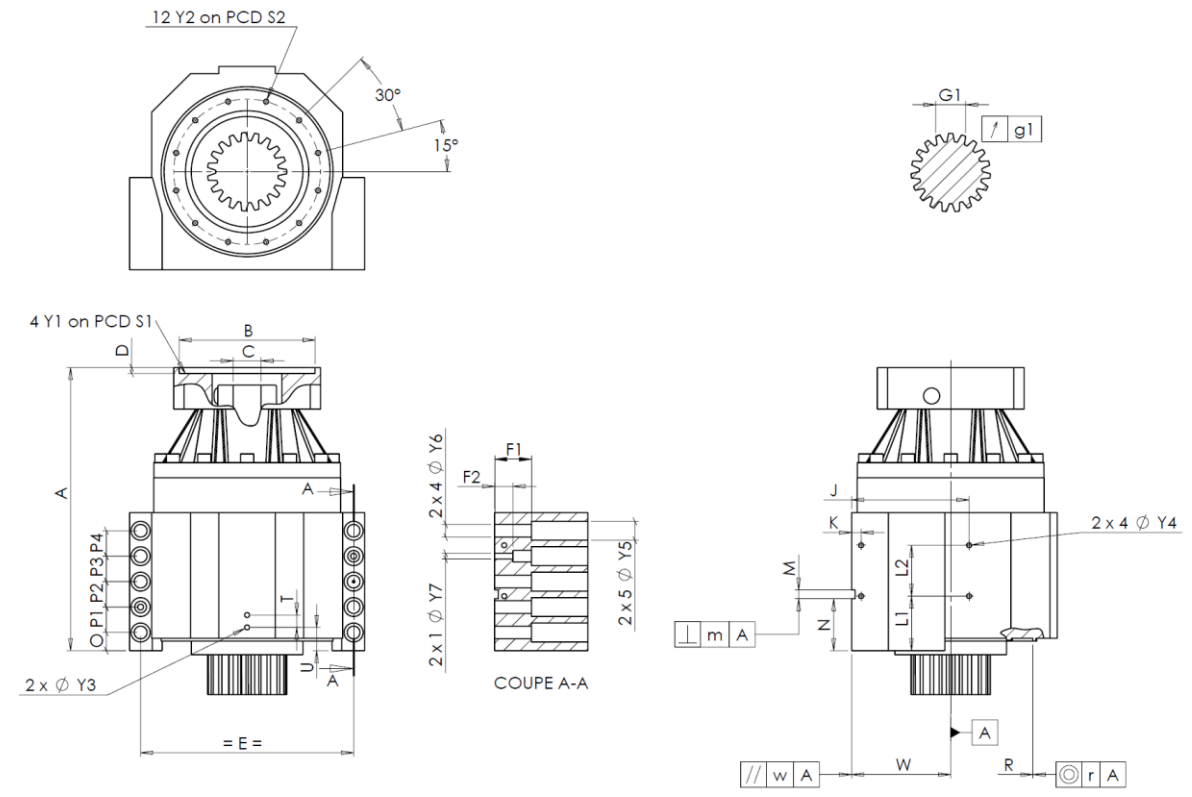
**CUSTOMER:** REDEX SHANGHAI      **CUSTOMER ORDER REF:** \*RXCN2022091646 IO

**DISTRIBUTOR:** REDEX SHANGHAI REPAIRING      **REDEX ORDER REF:** 217218

**DESIGNATION:** KRPX2.M1.31.3.H.28/38      **SERIAL NUMBER:** 907168

**CODE:** RX134762-12      **MOTOR FLANGE CODE:** RX128581-01

**EXTERNAL DIMENSIONS & INTERFACES:**      **SN:** 907168



For the installation, please refer to User Manual KRPX (182/010)

**SPECIFIC REMARKS:**

General tolerance: Js13      Cmm      Automatic / manual coordinate-measuring machine      μm      Micrometer      Cr      Calliper rule      Di      Dial indicator      Pg      Plug gauge

HOUSING				HOUSING				MOTOR FLANGE						
requirement		measure		requirement		measure		requirement		measure				
			F63		L1	60	Cr	60						
	Y2	M6x12	Pg	M6x12	L2	60	Cr	60	∅	B	181			
∅	S2	165	<sup>+0,1</sup> <sub>-0,1</sub>	Cr	165	J	130	Cr	130	∅	C	38		
	A	332	μm	332,67	K	11	Cr	11		D	8	Cr	8,45	
	E	240	Cr	240	2 x 4∅	Y4	M6x12	Pg	M6x12	∅	S1	215	Cr	215
	O	15	Cr	15	F1	40	Cr	40	∅	Y1	M12	Pg	M12	
	P1	30	Cr	30	F2	24	Cr	24	<b>No-load input torque</b>					
	P2	30	Cr	30	2 x 1∅	Y7	10	μm	10	Line 1		0,7 Nm		
	P3	30	Cr	30	2 x 4∅	Y6	15,5	μm	15,5					
	P4	30	Cr	30	2 x 5∅	Y5	24	μm	24					
	T	14	Cr	14	M H6	10	<sup>+0,009</sup> <sub>0</sub>	Cmm	10,006			<b>Line</b>	<b>Stiffness</b>	
	U	26	Cr	26	⊥	m	0,05	Cmm	0,008	Torsional stiffness (Nm/arcmin)		1	243,75	
2 x 1∅	Y3	M6x12	Pg	M6x12		N	55	<sup>+0,1</sup> <sub>-0,1</sub>	Cmm	54,984	Radial stiffness (N/μm)		1	580
	R	186	<sup>+0,2</sup> <sub>+0,1</sub>	Cmm	186,149	A	W	110	<sup>+0,02</sup> <sub>-0,02</sub>	Cmm	110,01			
⊙	r	0,1	Cmm	0,028	//	w	0,03	/A	Cmm	0,007				

OUTPUT PINION				Noise level	
			F692	@1600 rpm input (dB(A))	
<b>Span dimension over 4 teeth</b>					
	G1	44,27	<sup>0</sup> <sub>-0,03</sub>	Cmm	44,255
↗	g1	0,022		Di	0,01

**Date:** 28/12/2022      **Version:** A

**Visa:** P VASLIER

Product images are for illustrative purposes only.