

**CUSTOMER:** REDEX SHANGHAI      **CUSTOMER ORDER REF:** \*RXCN2022091646 IO

**DISTRIBUTOR:** REDEX SHANGHAI REPAIRING      **REDEX ORDER REF:** 217218

**DESIGNATION:** KRPX3+M.31.3.H.28/38      **SERIAL NUMBER:** 907165

**CODE:** RX131507-12      **MOTOR FLANGE CODE:** RX128581-01

For the installation, please refer to User Manual KRPX (182/010)

**SPECIFIC REMARKS:**

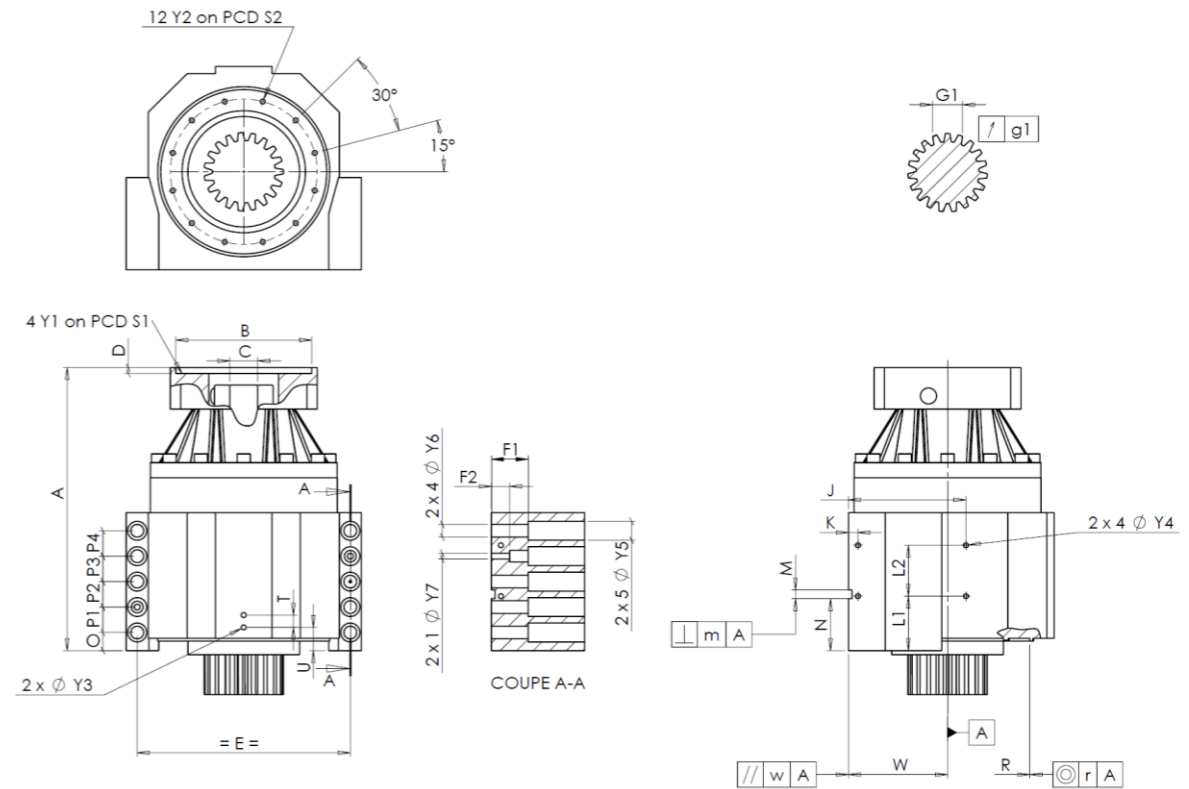
Product images are for illustrative purposes only.



1, Rue Paul De Fontenay  
F- 45210 FERRIERES  
www.redex-group.com

Tel: +33 2 38 94 42 00  
Fax: +33 2 38 94 42 99  
Email: info@redex-group.com

**EXTERNAL DIMENSIONS & INTERFACES:**      **SN:** 907165



General tolerance: Js13      Cmm      Automatic / manual coordinate-measuring machine      μm      Micrometer      Cr      Calliper rule      Di      Dial indicator      Pg      Plug gauge

HOUSING				HOUSING				MOTOR FLANGE						
requirement		measure		requirement		measure		requirement		measure				
		F84		L1	75	Cr	75	∅	B	181	μm	181		
∅	Y2	M8x15	Pg	M8x15	L2	70	Cr	70	∅	C	38	+0,05 +0,025	μm	38,045
	A	389,5	μm	389,41	J	160	Cr	160		D	8	Cr	8,47	
	E	290	Cr	290	K	13	Cr	13	∅	S1	215	Cr	215	
	O	25	Cr	25	2 x 4∅	Y4	M8x15	Pg	M8x15	∅	Y1	M12	Pg	M12
	P1	35	Cr	35	F1	50	Cr	50	<b>No-load input torque</b>					
	P2	35	Cr	35	F2	25	Cr	25					Line 1	
	P3	35	Cr	35	2 x 1∅	Y7	12	μm	12	<b>Line      Stiffness</b>				
	P4	35	Cr	35	2 x 4∅	Y6	17,5	μm	17,5					Torsional stiffness (Nm/arcmin)
	T	17	Cr	17	2 x 5∅	Y5	26	μm	26	Radial stiffness (N/μm)		1      1104		
2 x 1∅	Y3	M8x15	Pg	M8x15	M H6	12	+0,011 0	Cmm	12,004					
	U	32	Cr	32	⊥	m	0,05	Cmm	0,02					
	R	226	+0,2 +0,1	Cmm	226,143	A								
⊙	r	0,1	Cmm	0,012	//	w	0,03	/A	Cmm	0,005				

OUTPUT PINION				Noise level	
		F825		@1600 rpm input (dB(A))	67,0
Span dimension over 3 teeth					
	G1	39,25	0 -0,03	Cmm	39,235
↗	g1	0,022		Di	0,02

**Date:** 07/12/2022

**Version:** A

**Visa:** C DE MIRANDA



1, Rue Paul De Fontenay  
F- 45210 FERRIERES  
www.redex-group.com

Tel: +33 2 38 94 42 00  
Fax: +33 2 38 94 42 99  
Email: info@redex-group.com