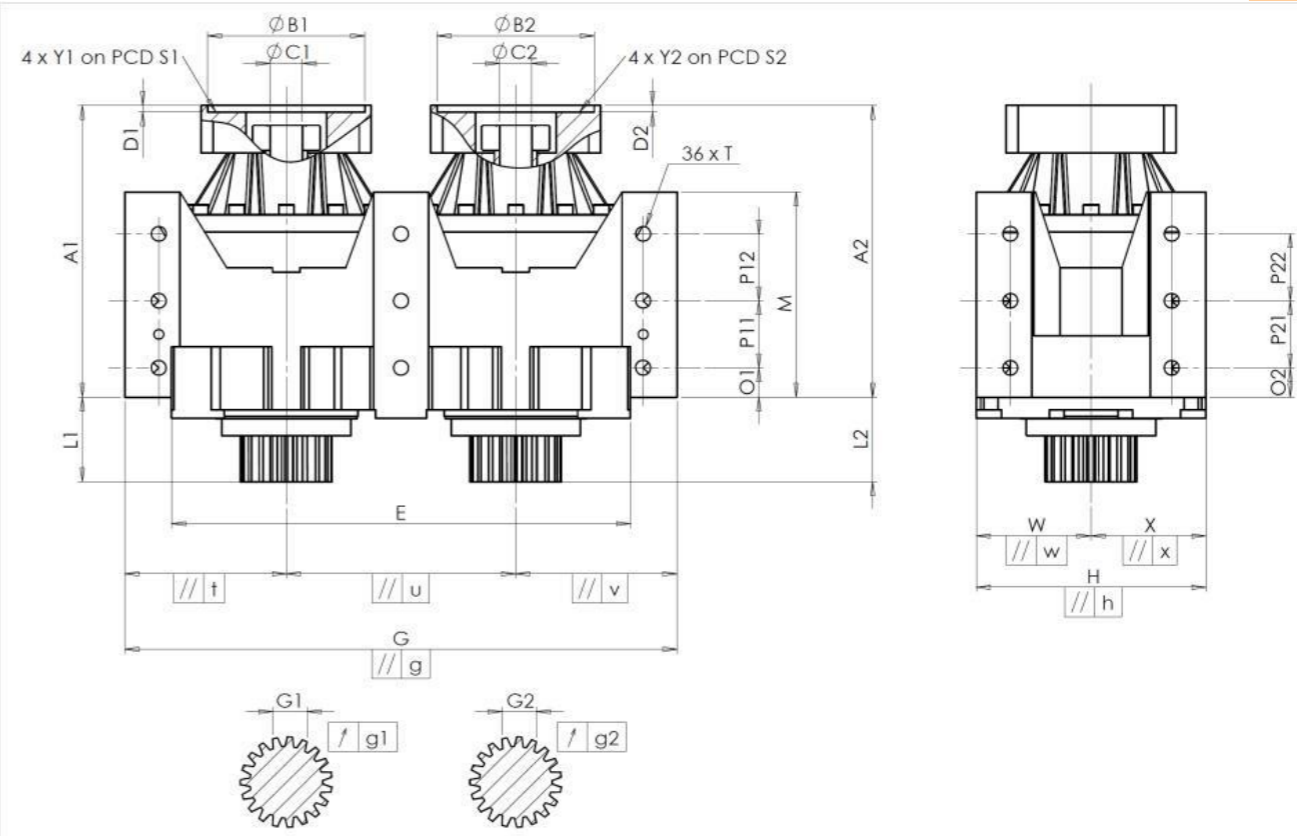


CUSTOMER: AXA CUSTOMER ORDER REF: \*BE22-002795-HME AXA  
 DISTRIBUTOR: REDEX GmbH REDEX ORDER REF: 216893  
 DESIGNATION: DRP2.M1.17.3.H.28/38 SERIAL NUMBER: 906882  
 CODE: RX135309-41 MOTOR FLANGE CODE: RX129461-01

EXTERNAL DIMENSIONS & INTERFACES: SN: 906882



For the installation, please refer to User Manual DRP (182/009)

SPECIFIC REMARKS:

HOUSING		HOUSING		MOTOR FLANGE	
requirement	measure	requirement	measure	requirement	measure
	E8126	O1	30	Cr	30
E	460 <sup>0</sup> <sub>-0,05</sub> Cmm	P11	75	Cr	75
G	560 <sup>+0,1</sup> <sub>-0,1</sub> Cmm	P12	75	Cr	75
// g	0,045 Cmm	M	210 <sup>+0,1</sup> <sub>-0,1</sub> Cmm	Cmm	209,969
// t	0,045 Cmm	O2	30	Cr	30
// u	0,03 Cmm	P21	75	Cr	75
// v	0,045 Cmm	P22	75	Cr	75
W	115 Cmm	Ø T	M16	Pg	M16
// w	0,03 Cmm	<b>OUTPUT PINION</b>			
X	115 Cmm	<b>Pinion 1</b>		F664	
// x	0,03 Cmm	<b>Span dimension over 4 teeth</b>			
H	230 <sup>+0,025</sup> <sub>-0,025</sub> Cmm	G1	44,27 <sup>0</sup> <sub>-0,03</sub> Cmm	44,255	
// h	0,02 Cmm	g1	0,022	Di	0,01
A1	282 Cmm	<b>Pinion 2</b>		F645	
L1	85 Cmm	<b>Span dimension over 4 teeth</b>			
A2	282 Cmm	G2	44,27 <sup>0</sup> <sub>-0,03</sub> Cmm	44,255	
L2	85 Cmm	g2	0,022	Di	0,01
<b>No-load input torque</b>					
		Line 1		0,5 Nm	
		Line 2		0,5 Nm	
<b>Line Stiffness</b>					
		Line 1		243,75	
		Line 2		243,75	
<b>Noise level</b>					
		@ 1600 rpm input (dB(A))		66,0	

Date: 27/07/2022

Visa: C DE MIRANDA

Version: A

Product images are for illustrative purposes only.