

CUSTOMER: TENOVA **CUSTOMER ORDER REF:** *88 TENOVA

DISTRIBUTOR: ANDANTEX S.r.l **REDEX ORDER REF:** 216743

DESIGNATION: KRPX1+M.31.3.S.22/32 **SERIAL NUMBER:** 906693

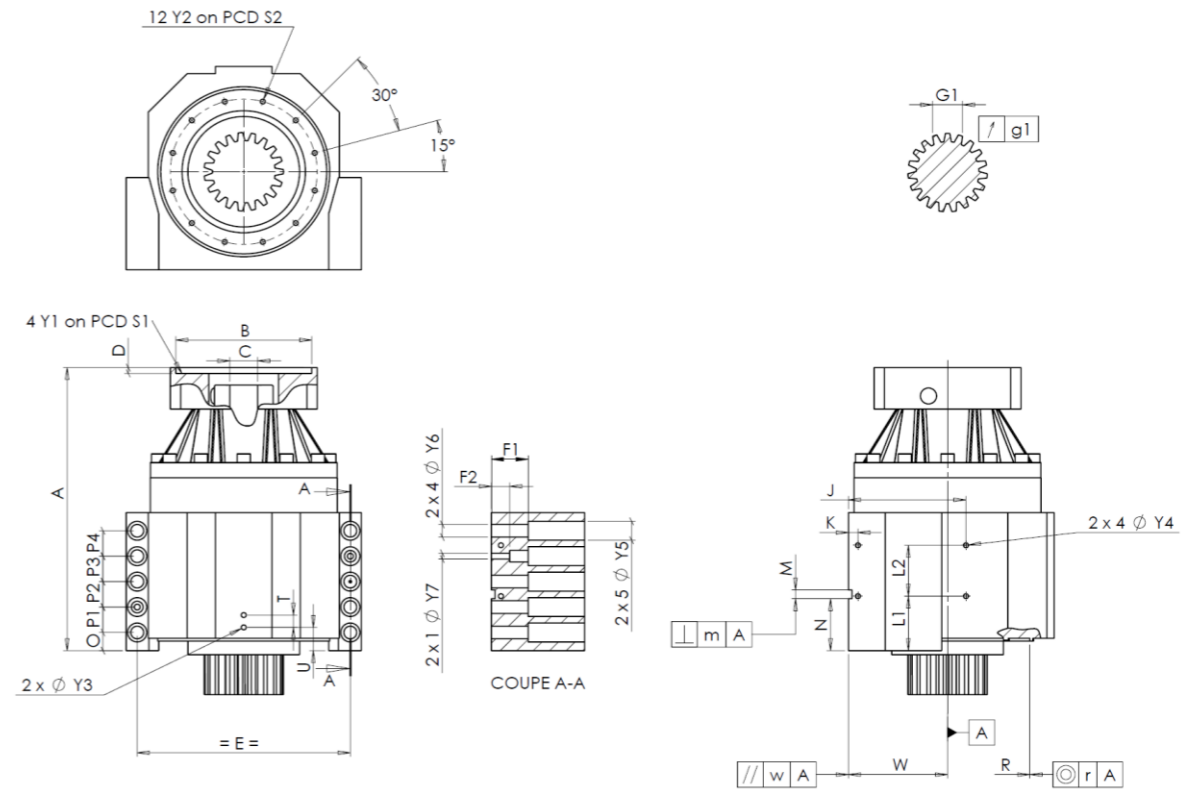
CODE: RX132669-12 **MOTOR FLANGE CODE:** RX128707-05

For the installation, please refer to User Manual KRPX (182/010)

SPECIFIC REMARKS:

Product images are for illustrative purposes only.

EXTERNAL DIMENSIONS & INTERFACES: **SN:** 906693



General tolerance: Js13 Cmm Automatic / manual coordinate-measuring machine μm Micrometer Cr Calliper rule Di Dial indicator Pg Plug gauge

HOUSING				HOUSING				MOTOR FLANGE							
requirement		measure		requirement		measure		requirement		measure					
			D92	L1	51	Cr	51								
	Y2	M6x12	Pg	M6x12	L2	48	Cr	48	∅	B	131	μm	131		
∅	S2	120	^{+0,1} _{-0,1}	Cr	120	J	105	Cr	105	∅	C	32	^{+0,05} _{+0,025}	μm	32,05
	A	253	μm	253,38	K	11	Cr	11		D	8	Cr	8,4		
	E	175	Cr	175	2 x 4∅	Y4	M6x12	Pg	M6x12	∅	S1	165	Cr	165	
	O	15	Cr	15	F1	40	Cr	40	∅	Y1	M10	Pg	M10		
	P1	24	Cr	24	F2	24	Cr	24	No-load input torque Line 1 0,2 Nm						
	P2	24	Cr	24	2 x 1∅	Y7	10	μm					10		
	P3	24	Cr	24	2 x 4∅	Y6	11	μm	11	Line Stiffness					
	P4	24	Cr	24	2 x 5∅	Y5	18	μm	18						
	T	14	Cr	14	M H6	8	^{+0,009} ₀	Cmm	8	Torsional stiffness (Nm/arcmin)	1	81,39			
	U	26	Cr	26	⊥	m	0,05	Cmm	0,004						
2 x 1∅	Y3	M6x12	Pg	M6x12	N	47	^{+0,1} _{-0,1}	Cmm	47,043	Radial stiffness (N/μm)	1	309			
	R	135	^{+0,2} _{+0,1}	Cmm	135,144	A	W	80	^{+0,02} _{-0,02}				Cmm	80,016	
⊙	r	0,1	Cmm	0,017	//	w	0,03	/A	Cmm	0,006					

OUTPUT PINION				Noise level	
			K121	@1600 rpm input (dB(A))	63,5
Span dimension over 3 teeth					
	G1	23,28	⁰ _{-0,03}	Cmm	23,27
↗	g1	0,021	Di	0,01	

Date: 14/09/2022

Version: A

Visa: P VASLIER